

Valkyrie2544

User Manual

This is the User Manual for Valkyrie2544. Valkyrie2544 is a PC application that enables you to perform advanced network tests according to the [RFC 2544 specification](#) using one or more of the [Xena layer 2-3 test equipment chassis](#).

Last updated: 2018-11-06

Contents

INSTALLATION.....	3
GENERAL INFORMATION	3
Capabilities	3
Terminology.....	4
Available Tests.....	5
Getting Started with Valkyrie2544	6
VALKYRIE2544 REFERENCE MANUAL	11
Overview.....	11
Physical Ports Panel.....	13
Test Configuration Panel	14
Selected Ports Panel	22
Multi-Stream Configuration	26
Protocol Segment Profiles Panel	27
Reporting Options Panel.....	31
Result Data Panel.....	33
Configuration Errors Panel	33
Command Line Invocation.....	34
Limitations	35
TROUBLESHOOTING	37
Basic Instructions.....	37
Additional Details	38

INSTALLATION

Windows

Valkyrie2544 is a standard Windows .NET application supporting Windows XP (SP3) and all later Windows versions. It requires Microsoft .NET version 4.0.

After installation you can find a shortcut to the application either in the **Start -> Programs -> Xena Networks** menu or (if you have selected this during setup) on your desktop.

The application is installed as part of the Xena software release package [which can be obtained here](#).

Linux Support

[Refer to this page for details on support for Linux.](#)

GENERAL INFORMATION

CAPABILITIES

The Valkyrie2544 application features the following capabilities:

- Enables the user to create, edit and execute test configurations using Xena Networks test equipment in accordance with **RFC 2544**.
- Full support for the 4 test-types specified in RFC 2544.
- Ability to partially enable one or more of the test-types.
- Support for multiple ValkyrieBay and ValkyrieCompact test chassis.
- Support for different network topologies and traffic flow directions.
- Support for both layer 2 and layer 3 testing.
- Support for either IPv4 or IPv6.
- Ability to flexibly define the protocol layers supported by the test (Ethernet, Customer and Service VLANs, IP and UDP).
- Ability to specify different protocol headers for each port.
- Ability to set modifiers on virtually any protocol field in the protocol headers using a Wireshark-like tree view.
- Support for asymmetric port rates and DUT throughput rates. The Throughput test can be configured to either measure the least common throughput rate or measure a per-port rate.
- Test reports can be created in either PDF, XML or CSV format or any combination hereof.
- Extensive configuration options to fine-tune the tests.

TERMINOLOGY

This section provides explanations for the terminology used by the Valkyrie2544.

Term	Explanation
<i>Run</i>	A “test run” (or simply “run”) denotes the part of the test configuration that is associated with a single test-type and a single packet size. This concept is used for the purpose of progress reporting. A test configuration that specifies the use of e.g. 5 packet sizes and has enabled 3 of the possible 4 test-types will thus consist of $5 \cdot 3 = 15$ runs.
<i>Iteration</i>	Each test-type can be configured to repeat the test runs associated with the test-type a number of times. Each of these additional runs is called an iteration.
<i>Trial</i>	A “trial” denotes a single execution of an iteration.
<i>Test Type</i>	Denotes one of the the four types of tests according to RFC 2544: Throughput, Latency (and Jitter), Loss and Back-to-Back (a.k.a. Burst).
<i>Pair Typology</i>	A topology where each port is associated with exactly one other peer port. The ports must be associated with opposing EAST/WEST groups. A test configuration can contain several port pairs. The transmit and receive roles of the two ports are determined by the Direction setting.
<i>Blocks Typology</i>	A topology where each port is associated with either the EAST or the WEST group. Each port in the EAST group will then communicate with all ports in the WEST group, and vice versa. There are thus no direct relation between ports like there are for the Pairs topology. The transmit and receive roles of the ports are determined by the Direction setting.
<i>Mesh Typology</i>	A topology where all ports communicate with each other. The direction will always be bidirectional and the EAST/WEST group attribute is not used.
<i>Direction</i>	Denotes the direction of the traffic flows in relation to the group definitions. The direction can be either unidirectional or bidirectional. Unidirectional flows can be either EAST-to-WEST or WEST-to-EAST.

AVAILABLE TESTS

This section describes the test available in Valkyrie2544. They closely follow the definition in the [RFC 2544 specification](#).

Throughput Test

The throughput test is an iterative test that attempts to find the throughput for a Device Under Test (DUT). [RFC 1242](#) defines the throughput as “The maximum rate at which none of the offered frames are dropped by the device”.

The test uses a binary search algorithm to locate the throughput rate. One iteration of the test will produce a single test result.

Latency/Jitter Test

The latency/jitter test is also a rate sweep test that attempts to determine the latency and jitter for a DUT throughout a defined range of input data rates. [RFC 1242](#) broadly defines latency as the time it takes for a frame to traverse the DUT, but the precise definition depends on the type of forwarding used in the DUT. Latency is also known as the “Frame Transfer Delay” (FTD). Jitter is not defined in this RFC but is defined as the variation in latency over time. It is also known as the “Frame Delay Variance” (FDV).

The test measures the average, maximum and minimum latency and jitter values at a series of input rates defined by an initial value a, maximum value and a step value. One iteration of the test will produce a test result for each rate in the series.

Frame Loss Test

The loss test is a rate sweep test that attempts to determine the frame loss rate for a DUT throughout a defined range of input data rates. [RFC 1242](#) defines the loss as the “percentage of frames that should have been forwarded by a network device under steady state (constant) load that were not forwarded due to lack of resources”.

The test measures the frame loss at a series of input rates defined by an initial value a, maximum value and a step value. One iteration of the test will produce a test result for each rate in the series.

Back-To-Back Test

The Back-to-Back test is a combination of an iterative test and a rate sweep test that characterizes the ability of a DUT to process back-to-back frames at various rates. [RFC 1242](#) defines back-to-back frames as “fixed length frames presented at a rate such that there is the minimum legal separation for a given medium between frames over a short to medium period of time, starting from an idle state”. The test attempts to locate the maximum number of frames that can be sent back-to-back at a given rate without any frame loss. This is also known as the “burst size”.

The test uses a binary search algorithm to locate the burst size at a given rate. One iteration of the test will produce a single test result for each input rate used.

GETTING STARTED WITH VALKYRIE2544

This manual contains some examples of basic Valkyrie2544 configurations to get you started using the application.

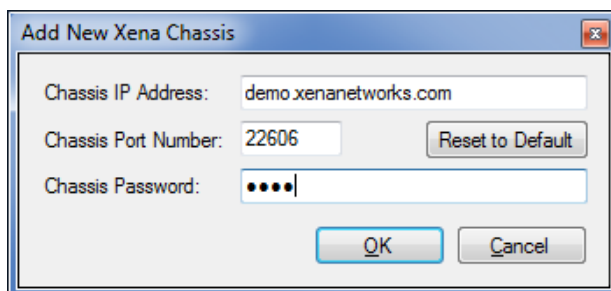
The parent manual page for the Valkyrie2544 test application [can be found here](#). For a more detailed description of all available test properties please refer to the [Valkyrie2544 Reference Manual](#).

Layer-2 Tests

This section describes various layer-2 (Ethernet with optional VLAN) tests.

Ethernet Point-to-Point Test

This example will describe how a simple pair-based unidirectional test using plain Ethernet transport with two testports is created and executed.



Start the Valkyrie2544 application. Select the **File > New ...** menu option to ensure that you start with a new configuration.

Push the **Add Chassis** button in the toolbar and enter the IP address and password of the Xena tester you want to use. Keep the default value of 22606 for the port number unless you know that your tester is configured with a different port number. Press **OK**. The Valkyrie2544 will now connect to the chassis and read all module and port information. You should now see all available test modules and ports on the chassis in the **Physical Ports** panel to the left.

Change to the **Test Configuration** tab. In the **Topology and Frame Content** subtab set the **Topology** property to **Pairs** and the **Direction** property to **East -> West**. Leave all other properties in this subtab and the other two subtabs at their default values.

Change to the **Selected Ports** tab. Locate two ports in the **Physical Ports** panel which you want to use in the test and drag them to the **Selected Ports** tab. Note that these two ports should be able to communicate with each other using plain Ethernet transport. Either they should be connected to the same layer-2 switch or they could be connected together using a cable.

Set the **Port Group** property for the first port to “East”. Set the same property for the other port to “West”.

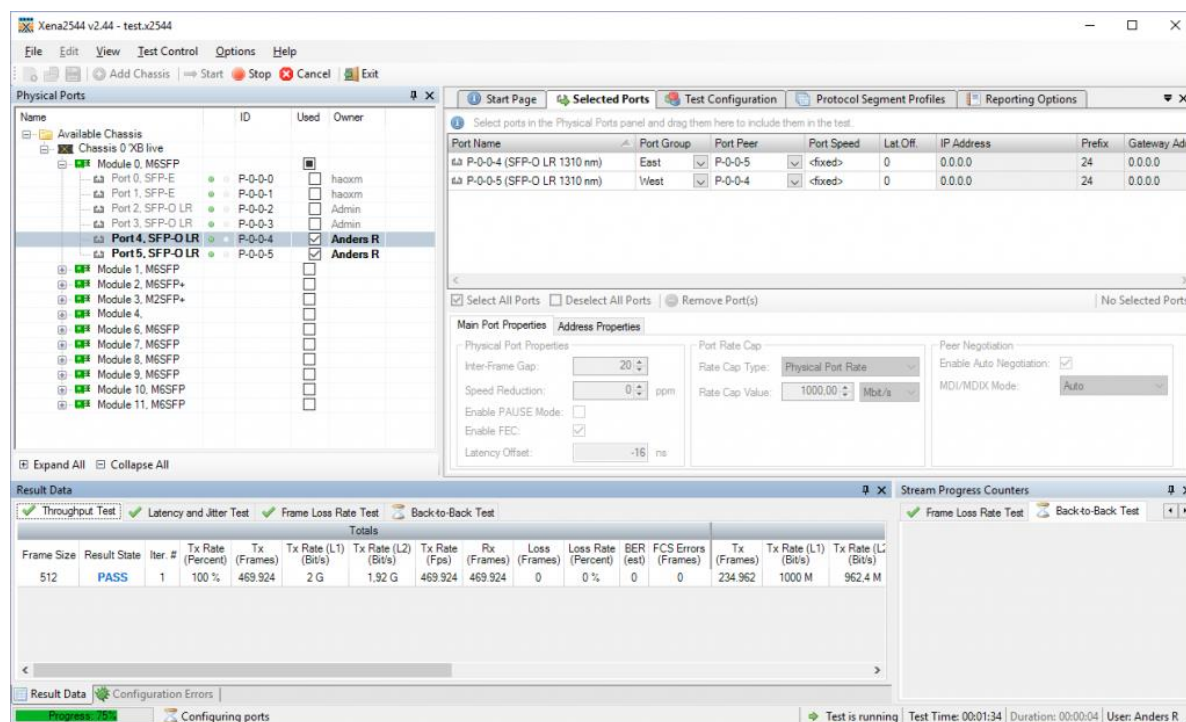
Press the red “Select peer ...” selector in the **Port Peer** column for the first port. Select the other port in the resulting drop-down box, as shown in the figure below. The equivalent selector for the other port will change automatically.

Change to the **Reporting** tab and ensure that the **Generate PDF report** option is checked. Also ensure that the **Open report in Associated Viewer** option in the **Options** menu is checked.^[1]

Press the **Save Configuration** tool icon in the toolbar (or select the **File > Save...** menu item). Enter a suitable filename for the configuration.

Press the **Start** button in the toolbar. Your test will now start and the progress will be indicated in the status line at the bottom of the GUI.

When all 4 tests have completed the generated PDF report will automatically be shown in the associated PDF viewer.



Adding a VLAN tag

This example will expand on the previous example and show how to add a VLAN protocol segment to the test.

Open the configuration file used in the previous example. You may optionally save it under a new name if you want to preserve the original.

Change to the **Protocol Segment Profiles** tab. At the top you will see a list of existing profiles.

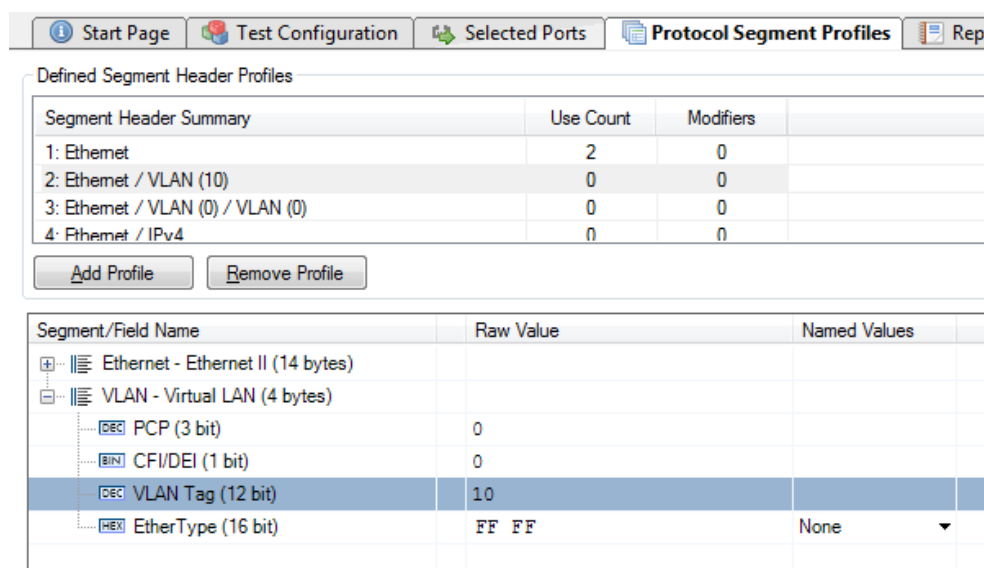
Select the profile labelled **Ethernet / VLAN (0)**. This is a predefined profile created by the Valkyrie2544 as a convenience for you. We will however need to modify it a bit.

When you select the profile the treeview below the profile list will be populated with the available protocol segments in the profile. Expand the **VLAN** branch and locate the **VLAN Tag** field. Change the value to e.g. 10.

You should now see that the profile label changes to **Ethernet / VLAN (10)**.

Change to the **Selected Ports** tab. Change the **Protocol Segment profile** value for each of the two ports to the profile we just edited (hint: if you select both ports using <Ctrl>-mouseclick you can change this value for both ports simultaneously).

Press the **Start** button in the toolbar to start the test.



Layer-3 Tests

This section describes various layer-3 (IP) tests.

IPv4 Point-to-Point Test

This example will describe how a simple pair-based bidirectional test using IPv4 transport with two testports is created and executed.

Start the Valkyrie2544 application. Select the **File > New ...** menu option to ensure that you start with a new configuration.

Add a chassis to the test configuration.

Change to the **Test Configuration** tab. In the **Topology and Frame Content** subtab set the **Topology** property to **Pairs** and the **Direction** property to **Bidirectional**. Leave all other properties in this subtab and the other two subtabs at their default values.

Change to the **Selected Ports** tab. Locate two ports in the **Physical Ports** panel which you want to use in the test and drag them to the **Selected Ports** tab. Note that these two ports should be able to communicate with each other using IPv4 transport.

Set the **Port Group** property for the first port to "East". Set the same property for the other port to "West".

Set the two ports as each others peer using the **Port Peer** property.

Set the **Protocol Segment Profile** for each port to the **Ethernet / IPv4** profile.

Configure each port with an appropriate IP address and prefix. Also add the address of the associated IP gateway if the two ports are located in separate IP subnets.

Press the **Start** button in the toolbar to start the test.

IPv4/UDP Blocks Test

This example will expand on the previous example and show how to change the topology and the number of frame sizes used in the test.

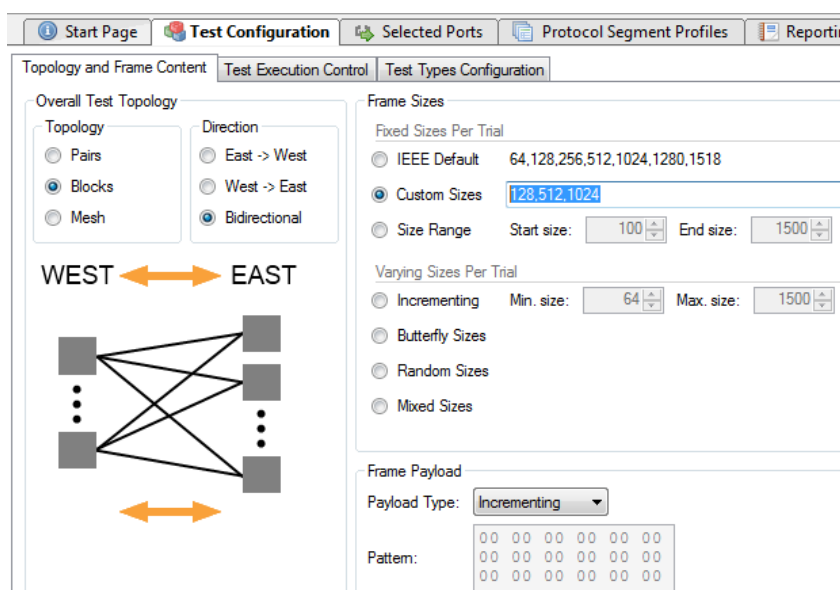
Open the configuration file used in the previous example. You may optionally save it under a new name if you want to preserve the original.

Change to the **Test Configuration** tab. In the **Topology and Frame Content** subtab set the **Topology** property to **Blocks** and the **Direction** property to **Bidirectional**.

In the **Frame Sizes** section ensure that the **Custom Sizes** property is selected. Enter the frame sizes 128, 512 and 1024 separated by commas in the field next to this property (see the figure below).

Change to the **Selected Ports** tab. Set the **Protocol Segment profile** value for each of the two ports to the **Ethernet / IPv4 / UDP** profile.

Press the **Start** button in the toolbar to start the test. The tests will now be performed for all the defined frame sizes.



IPv6 Mesh Test

This example will again expand on the previous example and show how to create and configure a

new protocol segment profile.

Open the configuration file used in the previous example. You may optionally save it under a new name if you want to preserve the original.

Change to the **Test Configuration** tab. In the **Topology and Frame Content** subtab set the **Topology** property to **Mesh**. The Direction will be forced to **Bidirectional** as all mesh flows are bidirectional by definition.

Change to the **Protocol Segment Profiles** tab. Press the **Add Profile** button below the profiles listview. A new profile with an Ethernet segment will be appended to the listview.

Select the new profile and press the **Add Segment** button in the command panel to the right. A dialog showing all possible segment definitions will be shown. Locate the **IPv6** segment definition in the list and press **OK**.

Change to the **Selected Ports** tab. Set the **Protocol Segment profile** value for each of the two ports to the new **Ethernet / IPv6** profile.

Configure each port with an appropriate IP address and prefix. Also add the address of the associated IP gateway if the two ports are located in separate IP subnets.

Press the **Start** button in the toolbar to start the test.

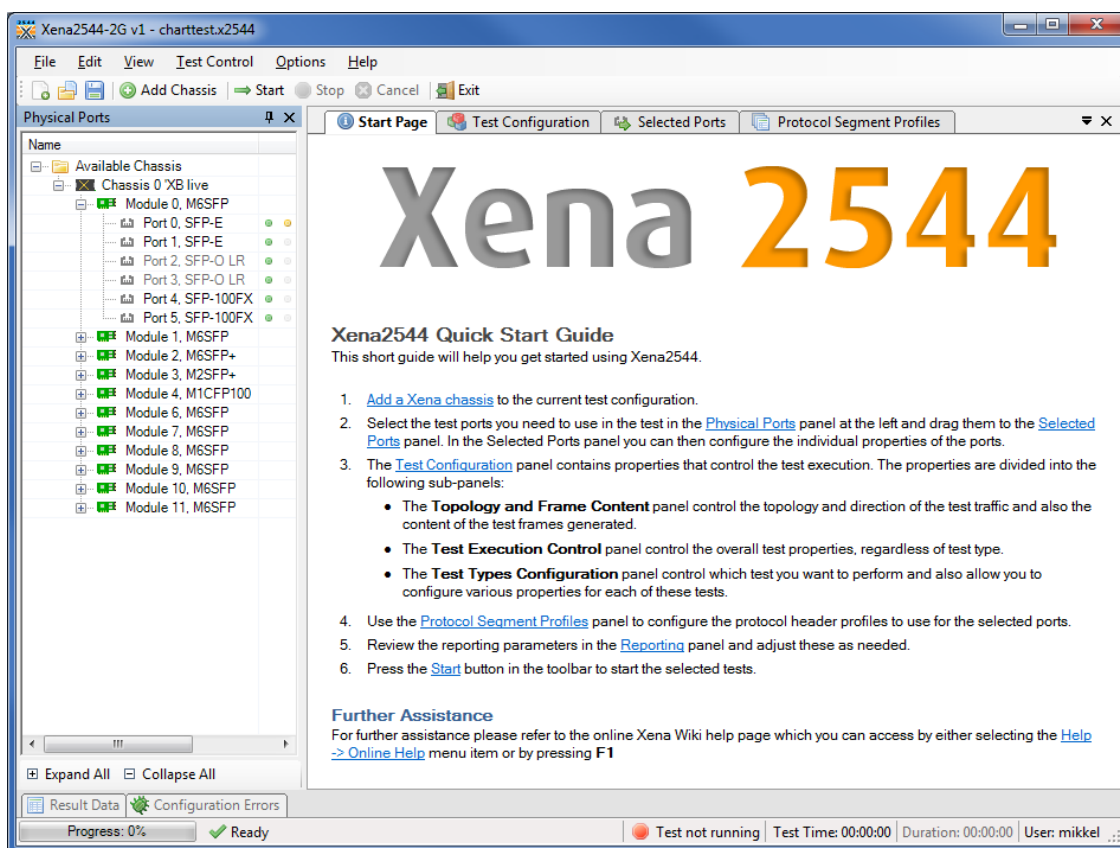
VALKYRIE2544 REFERENCE MANUAL

This is the Reference Manual for the Valkyrie2544 test application.

OVERVIEW

The main Valkyrie2544 application screen is shown in the image below.

The application is using a tabbed panel layout in order to divide the functionality into separate functional areas. The following sections will provide a brief explanation of the main areas of the GUI.



Menubar and Toolbar

The menubar at the top provides access to general functionality:

Menu item	Explanation
<i>File</i>	Contains options to load and save test configurations. Also contains a “Most Recently Used” list of the last 4 test configurations you have opened.
<i>Edit</i>	Contains options to specify and edit the Xena tester chassis used by the test configuration.
<i>View</i>	Enables you to show or hide the various panels in the application.

<i>Test Control</i>	Contains options to start, stop or cancel the execution of a test configuration.
<i>Options</i>	Contains various application-level options for the Valkyrie2544 application. These options are thus not associated with individual test configurations but are valid for the application as a whole.
<i>Help</i>	Provides links online manuals (such as this manual)

The toolbar provides easy shortcuts to the most frequently used menu functions.

Application Panels

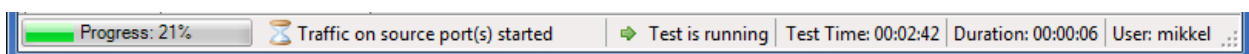
The application panels are contained in the tabbed panel which takes up the center part of the GUI.

Panel	Explanation
Start Page	This panel contains a short Quick Start guide. Once you feel that this information is no longer needed you can close the panel using the small 'x' at the right of the panel bar.
Test Configuration	This panel contains all test configuration options. It is sub-divided into tree sub-panels.
Selected Ports	This panel allows you to include Xena testports in your test and to configure the behavior of these ports.
Protocol Segment Profiles	This panel allow you to configure the various protocol segment profiles in the configuration. You can modify existing profiles, add new profiles, and also remove profiles you do not need.
Reporting Options	This panel contains configuration options related to reporting of test results.

The function of the various panels are explained in more detail in the following sections.

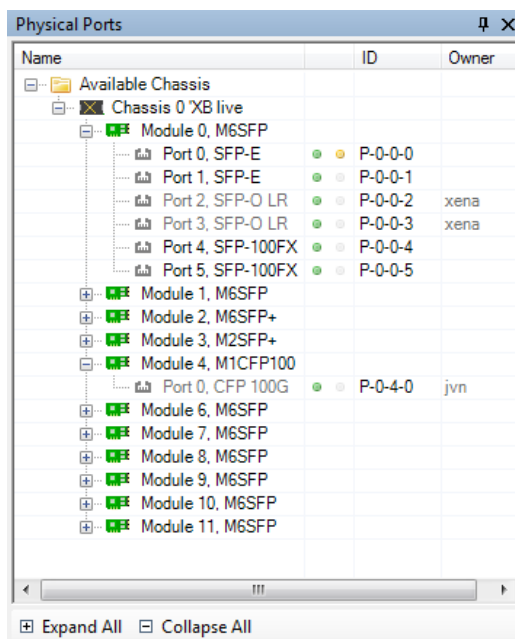
Status Line

The status line at the bottom provides information about the current test progress. It contains the following fields:



Field	Explanation
Progress Bar:	Shows the progress of the current test. The number of “steps” in the progress bar is the total number of trials in the test, which is equal to the number of iterations multiplied with the number of frame sizes defined. For tests using a predefined rate sweep vector (latency, loss and back-to-back) the number of rates are also factored in.
Information:	A text field showing the current activity of the test.
Test State:	A state field showing whether the test is running or not.
Test Time:	Shows the total elapsed test time, including delays between test trials.
Duration:	Show the duration progress for the current test trial. When traffic is not enabled the text is grayed out.
User:	The username for the current chassis session.

PHYSICAL PORTS PANEL



This panel displays all available ports on the currently connected Xena chassis. It is possible to connect to multiple Xena chassis at the same time.

It also allows you to perform the following actions:

View the current sync (link) and traffic state of the ports.

View the current ownership of the ports.

Request or relinquish ownership of ports.

Determine which ports are used in the test configuration.

Port States

The column to the right of the port names contain two state bullet icons.

The first bullet indicate the port sync (link) state. A green bullet means that the port is in sync and a red bullet means that the port has lost sync.

The second bullet indicate the traffic state. A yellow bullet means that traffic is being sent from the port. A gray bullet means that no traffic is active.

Using Ports in Your Test

Right-clicking on a port allow you to either add or remove the port from the test configuration. If you use either <Shift-mouseclick> or <Ctrl-mouseclick> to select multiple ports it is possible to add or remove multiple ports at the same time. Right-clicking on a module allow you to add/remove all ports on that module.

Instead of right-clicking on ports you can also select and drag the ports to the **Selected Ports** panel.

Port Ownership

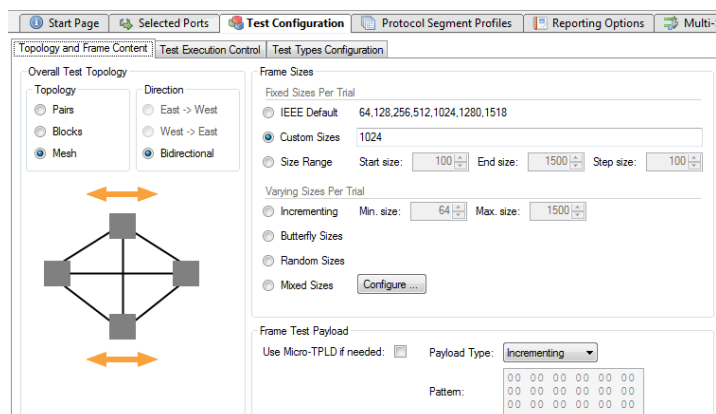
The right-most column display the username of the current port owner. Ports that are free (i.e., not owned by anyone) are displayed with a normal font. Ports that are owned by you are displayed with a bold font. Port owned by other users are displayed using a gray font.

You can reserve or relinquish ownership of a port by right-clicking on it and selecting the appropriate action. It is also possible to right-click on a module to perform the same operations on all ports on the module.

Note that the Valkyrie2544 will automatically reserve ownership of used ports when a test is started.

TEST CONFIGURATION PANEL

This panel contains all properties related to the execution of the tests.



Topology and Frame Content

Test Topology

These properties define the topology and direction of the test traffic:

Pairs: Each testport is placed in either the East or the West block. Then the ports are paired together two and two. Traffic is only flowing between paired ports. The Direction option determines which ports will be transmitting.

Blocks: Each testport is placed in either the East or the West block. Every port in the transmitting block sends traffic to every port in the other block. The Direction option determines if only one block or both will be transmitting.

Mesh: All testports send traffic to all other testports. The Direction option is ignored as Mesh traffic is always bidirectional.

Frame Sizes

This section allow you to specify the frame sizes to be used by the various tests. The available frame size options are divided into two groups, the “Fixed Sizes Per Trial” and the “Varying Sizes Per Trial”.

As the name indicates the “Fixed Sizes Per Trial” group uses a single frame size per trial. It is possible to specify multiple frame sizes which will cause the test to be repeated for each frame size.

The “Varying Sizes Per Trial” group will use many frame sizes for each trial. This is controlled by the hardware. Note that when calculating bitrates the average frame size will be used.

Frame Test Payload

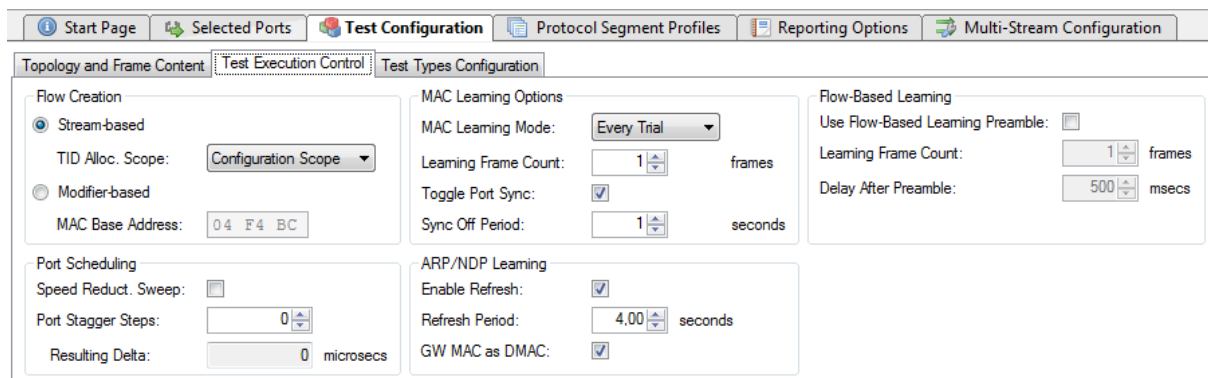
The normal Xena test payload (TPLD) section takes up 20 bytes and is used for various purposes, such as latency measurements, loss and misordering monitoring, payload integrity, etc. Due to this test payload it may be impossible to make room for protocol headers such as IPv4+UDP for smaller framesizes (e.g. ~64 byte).

By enabling the **Use Micro-TPLD if needed** option you permit Valkyrie2544 to use the smaller “micro”-TPLD if needed by the current framesize. The consequence of this will be that realtime monitoring of packet loss is no longer possible.

Note that Valkyrie2544 will only use the micro-TPLD for a testrun if the current framesize requires it. If you for instance use the default IEEE packet size distribution you may encounter that the micro-TPLD is only used for 64 byte packets but not for the other packet sizes.

The **Payload Type** property defines the type of test payload in the frames generated by the testports. If the payload type is set to “Pattern” you can specify the pattern in the **Pattern** field.

Test Execution Control



Flow Creation

These properties determine how the test flows between ports are created.

Stream-Based Flows

The default **Stream-based** setting will use one Xena stream for each flow from one port to another. This enables fine-grained per-port statistics and also allow you to specify field modifiers for various protocol fields. But as the number of streams that can be created on each test port is limited (see below) this will limit the total number of testports in your configuration.

The **TID Alloc.Scope** property determines how Valkyrie2544 allocates test payload identifier (TID) values.

Configuration Scope: Allocates a unique TID value for each stream created. This option ensures that only packets intended for a given port is taken into account. The downside is that for large configurations you may quickly run out of TID values due to hardware constraints.

Rx Port Scope: Allocate TIDs so that all streams received on any given port have a unique TID. TID values are reused between ports. This allow for larger configurations but the test is no longer able to detect if packets are mis-delivered by the DUT.

Source Port ID: Allocate TIDs so that all streams from a given port is set equal to the port index in the configuration. This is a slight variation of the previous method.

Modifier-Based Flows

If you encounter the above mentioned limitations in a layer-2 test you can select the **Modifier-based** option instead. In this mode the Valkyrie2544 will use a single stream for all flows from one port instead of one stream for every flow between two ports.

This will cause the Valkyrie2544 to create the traffic flows using so-called modifiers instead of using streams (refer to the ValkyrieManager documentation for details about this). This option will

however force the Valkyrie2544 to override the native port MAC addresses. The user can specify the 3 upper bytes of the MAC address using the **MAC Base Address** option but the lower part of the address will be assigned sequentially.

The modifier-based option is not available for layer-3 tests as we cannot emulate multiple MAC addresses the Valkyrie2544 needs to

Port Scheduling

If enabled the **Speed Reduction Sweep** property will assign a small speed reduction value to each port on a test module, so that each port on the module will get a different value. This property is only available for **Blocks** and **Mesh** topologies.

The **Port Stagger** property allow you to start the traffic on the testports with a fixed precise interval. The interval is expressed as a number of steps where each step is 64 microseconds.

MAC Learning Options

The **MAC Learning Mode** property can be used to instruct the testers to emit initial MAC learning packets in order for any network switches to learn the MAC addresses of the ports and avoid excessive flooding of packets. You can specify if you want MAC learning to be performed either at the start of every trial (the default), once when the test starts or not at all. You can also specify how many time each learning packet will be repeated every time with the **Learning Frame Count** option.

If the **Toggle Sync State** property is checked the sync state for all selected ports will be toggled off and on at the start of each test trial. This may ensure that the DUTs MAC-tables are cleared at the start of each test. The **Sync State Off Period** is the number of seconds to keep the port sync state off.

ARP/NDP Learning

This set of options control how the Xena tester advertises the IP addresses configured for its ports. The tester will use **ARP** for IPv4 and **NDP** for IPv6. If the **Enable Refresh** checkbox is checked the tester will periodically emit ARP requests (for IPv4) or Neighbor Advertisement requests (for IPv6). The period can be set using the **Refresh Period** field. This will prevent the ARP/NDP caches in the attached router from timing out during long test period thus causing a packet loss.

If the test uses multiple ports and/or you have used modifiers to emulate multiple IP address on one port the number of periodic refresh requests may be large. The tester will retransmit all refresh requests within the specified period, but it will not send them all in one batch. The tester will distribute the necessary requests evenly over the specified period.

When the GW MAC as DMAC checkbox is checked valkyrie2544 will use the ARP-resolved gateway MAC address as DMAC address for test packets. This is only relevant for IP traffic where the test ports belong to different IP subnets and the traffic needs to go through an IP router.

Flow-Based Learning

This section contains a few properties that are mainly useful when working with flow-based switches.

The **Use Flow-Based Learning Preamble** property will make the Valkyrie2544 emit a brief traffic preamble before starting the actual test. This can be used to ensure that the flow-based switch has learned all necessary addresses. The **Learning Frame Count** controls how many frames are sent in the preamble. The **Delay After Preamble** determines the size of the period between the preamble and the start of the actual test traffic.

Reset and Error Handling

If **Stop on LOS** is enabled, Valkyrie2544 will abort the test if a port loses the sync state during test.

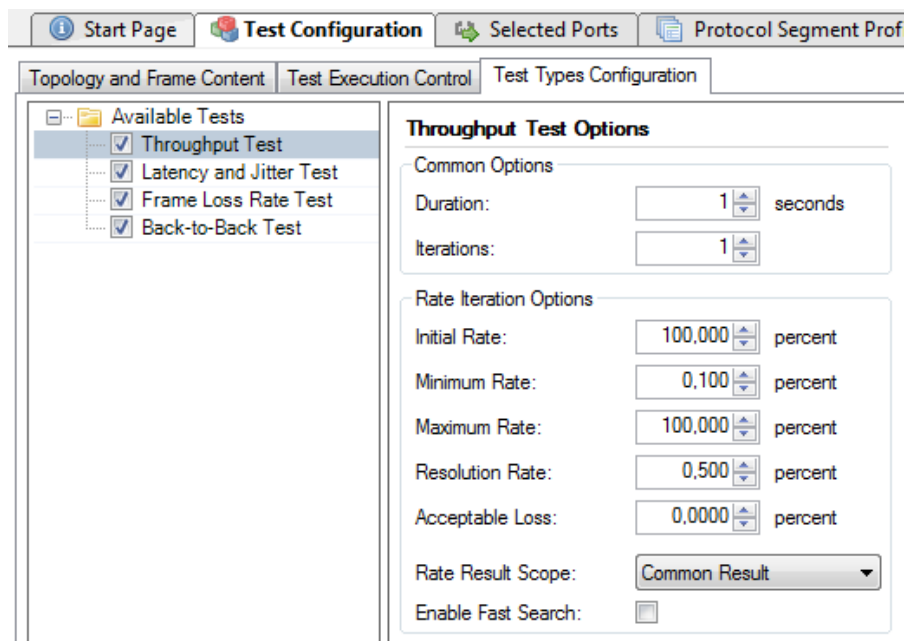
When a Valkyrie2544 test is started, the selected ports will be reset to ensure a known starting point for the test. The **Delay After Reset** parameter defines how long time Valkyrie2544 will wait after the reset before it continues with the test.

Test Types Configuration

This subpanel defines which RFC 2544 tests would want to perform and also allow you to configure how you want them executed.

To inspect and optionally change the test properties for each test, select the test in the tree view. The test properties will now be shown in the panel to the right.

The checkbox to the left of the test name in the tree view determines whether the test is executed or not.



Common Properties

All four test types share these properties.

Property	Explanation
Duration:	The duration of each test trial in seconds.
Iterations:	The number of times to repeat each test trial with the same set of test parameters.

Throughput Test Properties

Property	Explanation
Initial Rate:	The starting rate in percent used by the iteration.
Minimum Rate:	The minimum rate in percent. If the iteration reaches this value the test will be FAILED.
Maximum Rate:	The maximum rate in percent. If the iteration reaches this value the test will PASS.

Resolution Rate:	Defines the minimum difference between two rate iterations. If the difference between the next and the last rate iteration is less than this value the test is stopped and the last successful rate is reported.
Use Pass Threshold:	Selecting this property will allow you to specify a pass threshold value. If the test result is below this threshold the tested will be FAILED.
Pass Threshold:	The pass threshold explained above.
Acceptable Loss:	Allow you to specify an acceptable loss in percent of the port rate. Normally this would be zero but for certain network types (such as satellite links) a certain amount of frame loss is acceptable.
Rate Result Scope:	<p>Determines the scope of the rate result.</p> <p>The Common Result setting will iterate towards a single throughput rate result for all ports, which will be the lowest common rate found. This is the default setting.</p> <p>If the Per Source-Port Result setting is selected the Valkyrie2544 will attempt to iterate a separate rate value for each source port. This will obviously produce a (potentially different) result for each source port.</p>
Enable Fast Search:	<p>The default iteration algorithm used is a standard binary search, where the next attempted rate is found as the mean value of the sum of last passed and the last failed rate.</p> <p>If the fast search property is enabled the algorithm will take the measured loss rate into account when iterating down. This may in many cases result in a substantial reduction in the number of trials needed to reach the throughput rate result.</p>

Latency & Jitter Test Properties

Property	Explanation
Start Rate:	The starting rate in percent of the port rate used by the rate sweep.
End Rate:	The ending rate in percent of the port rate used by the rate sweep.
Step Rate:	The increments in rate percent for each step in the rate sweep.
Latency Mode:	The latency mode used when measuring the latency.
Relative to Throughput:	If checked the starting and ending rates will be calculated relative to the result from a preceding throughput test for the same frame size. If the throughput test has not been performed in the same test this setting is ignored.
Autoset Start Rate:	If checked the starting rate will be set to the result from a preceding throughput test for the same frame size. If the throughput test has not been performed in the same test this setting is ignored.
Autoset End	If checked the ending rate will be set to the result from a preceding

Rate:	throughput test for the same frame size. If the throughput test has not been performed in the same test this setting is ignored.
-------	---

Frame Loss Rate Test Properties

Property	Explanation
Start Rate:	The starting rate in percent of the port rate used by the rate sweep.
End Rate:	The ending rate in percent of the port rate used by the rate sweep.
Step Rate:	The increments in rate percent for each step in the rate sweep.
Use Pass/Fail Threshold:	Selecting this property will allow you to specify an Acceptable Loss value. If the test result is above this value the tested will be FAILED.
Acceptable Loss:	Allow you to specify an acceptable loss in percent of the port rate or as a frame count. Normally this would be zero but for certain network types (such as satellite links) a certain amount of frame loss is acceptable.
Gap Monitor Enable ¹ :	Selecting this property adds Gap Monitoring to the Frame Loss Rate Test. With this convergence time can be measured. The result will appear in the final report.
Gap Monitor Start ¹ :	Specifies the time period with no packets received that will trigger the gap monitor start.
Gap Monitor Stop ¹ :	Specifies the number of packets to receive to stop the gap monitor.

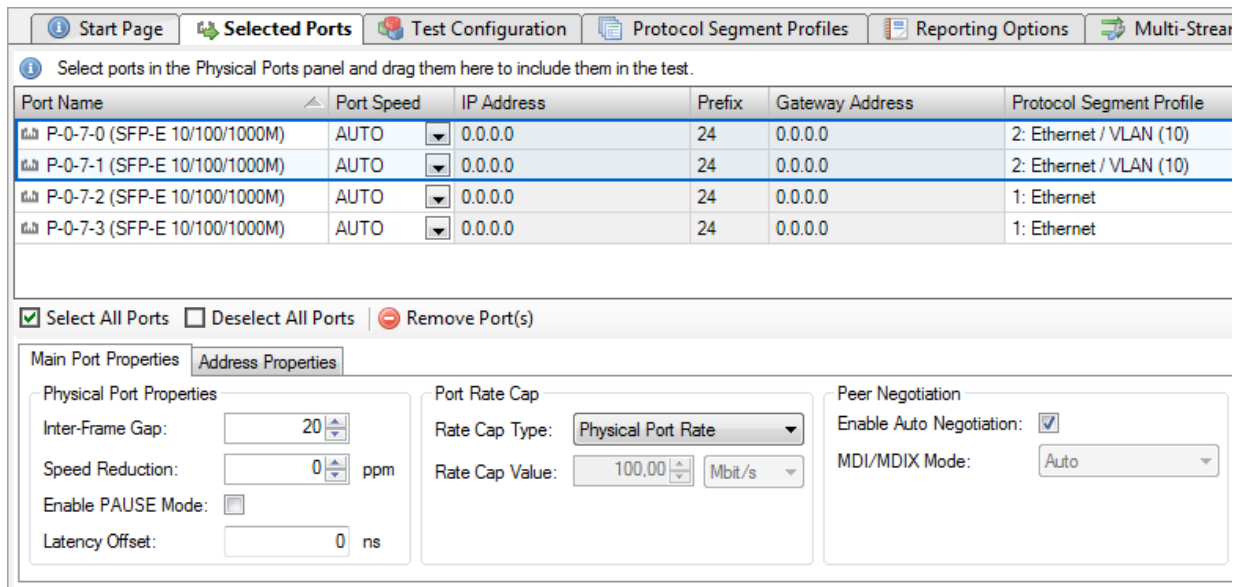
¹Requires software release 77

Back-to-Back Test Properties

Property	Explanation
Start Rate:	The starting rate in percent of the port rate used by the rate sweep.
End Rate:	The ending rate in percent of the port rate used by the rate sweep.
Step Rate:	The increments in rate percent for each step in the rate sweep.
Burst Resolution:	Defines the minimum difference between two burst size iterations. If the difference between the next and the last burst size iteration is less than this value the test is stopped and the last successful burst size is reported.

SELECTED PORTS PANEL

This panel allow you to control which ports are used in the test and also to configure the port properties. The most common port properties are available in the top port grid whereas other port properties are available in the tabbed view at the bottom.



The screenshot shows the 'Selected Ports' panel with a navigation bar at the top containing: Start Page, Selected Ports (active), Test Configuration, Protocol Segment Profiles, Reporting Options, and Multi-Stream. Below the navigation bar is an information icon and the instruction: 'Select ports in the Physical Ports panel and drag them here to include them in the test.'

Port Name	Port Speed	IP Address	Prefix	Gateway Address	Protocol Segment Profile
P-0-7-0 (SFP-E 10/100/1000M)	AUTO	0.0.0.0	24	0.0.0.0	2: Ethernet / VLAN (10)
P-0-7-1 (SFP-E 10/100/1000M)	AUTO	0.0.0.0	24	0.0.0.0	2: Ethernet / VLAN (10)
P-0-7-2 (SFP-E 10/100/1000M)	AUTO	0.0.0.0	24	0.0.0.0	1: Ethernet
P-0-7-3 (SFP-E 10/100/1000M)	AUTO	0.0.0.0	24	0.0.0.0	1: Ethernet

Below the table are controls: Select All Ports, Deselect All Ports, and . Below these are two tabs: 'Main Port Properties' (active) and 'Address Properties'. Under 'Main Port Properties', there are three sections:

- Physical Port Properties:** Inter-Frame Gap: 20, Speed Reduction: 0 ppm, Enable PAUSE Mode: , Latency Offset: 0 ns.
- Port Rate Cap:** Rate Cap Type: Physical Port Rate, Rate Cap Value: 100.00 Mbit/s.
- Peer Negotiation:** Enable Auto Negotiation: , MDI/MDIX Mode: Auto.

Port Grid

The grid view at the top of the panel show the ports that have been selected for use in the test.

Adding or Removing Ports

You can add ports to the test configuration as described in the [Physical Ports Panel](#) section above.

To remove one or more ports form the test configuration select the ports and press the **Remove Port(s)** button in the toolbar below the grid. Alternative you can right-click on the selected ports and select the **Remove Port(s) popup menu item**.

Port Grid Columns

The grid view contains the following columns:

Column	Explanation
Port Name	The name (ID and type) of the port.
Port Speed	The physical port speed to use in the test. Normally this should be left at the default AUTO value, but certain DUTs require that the port speed is fixed to a specific rate.

IP Address	The IP address that you want to use for the port. (*)
Prefix	The decimal network prefix for the address. (*)
Gateway Address	The gateway address for the assigned IP address. This field may be left empty if the ports are located on the same IP subnet. (*)
Protocol Segment Profile	The protocol segment profile to use for this port. Profiles can be created, edited and deleted in the separate Protocol Segment Profiles panel.

(*) These columns are only enabled if the selected protocol segment profile defines an IPv4 or IPv6 segment.

Port Properties Panel

Below the grid view you will find a tabbed panel containing less-frequently-used port properties.

Main Port Properties

Physical Port Properties

Property	Explanation
Inter-Frame Gap:	Specifies the minimum gap between frames generated for a port, expressed as a number of bytes.
Speed Reduction:	Specifies an optional speed reduction on the transmit side of the port, expressed as a ppm value.
Enable PAUSE Mode:	Controls whether the port responds to incoming PAUSE frames.
Enable Auto-Negotiation:	Controls whether auto-negotiation for the port is enabled or not.
Latency Offset:	An optional offset in nanoseconds for the port which is used for latency measurements. You can measure an appropriate value for this by looping two testports together and performing a latency test. The resulting average latency of this test should be zero. If this is not the case you can adjust the Latency Offset value until you reach a zero value. Then you can use the calibrated value in other tests.

Port Rate Cap

Property	Explanation
Rate Cap Type:	<p>Allow you to specify a rate cap type for the port. If enabled the port rate will be capped with the value specified.</p> <p>No changes are performed to the port physical rate (use the Port Speed property described above for that). Instead the capped rate is used when calculating the port rates, frames to transmit, etc.</p> <p>It is possible to specify custom rate cap profiles which may show up in this control.</p>

	See below for instructions.
Rate Cap Value:	The port cap value and unit to use if the Rate Cap Type property is set to Custom Rate Cap .

Peer Negotiation

Property	Explanation
Enable Auto Negotiation:	If checked the port will respond to incoming auto-negotiation frames.
MDI/MDIX Mode:	Enables control over the port MDI/MDIX mode.

Address Properties

Public Address

Property	Explanation
Public IP Address:	<p>If a port is located behind a NAT firewall/router it may be necessary to provide the public IP address offered by the NAT firewall/router. The Valkyrie2544 will then perform an ARP request for the public IP address before starting the test, in order to avoid packet loss due to an initial ARP phase.</p> <p>The real (internal) IP address of the port must still be configured in the main port grid as this may be used to send Gratuitous ARP packets from the port to the router before starting the test.</p>
Public IP Prefix:	The network prefix value for the public IP address.

Remote Loop Address

Property	Explanation
Remote Loop IP Address:	When a port with layer-3 protocol segments (IPv4/IPv6) has been configured as a looped port you must specify the IP address of the remote port so that the Xena tester can perform an ARP request for the MAC address.
Remote Loop MAC Address:	When a port with pure layer-2 protocol segments (Ethernet + optional VLAN) has been configured as a looped port you must specify the MAC address of the remote loop port to avoid excessive flooding.

Changing Settings on Multiple Ports

It is possible to change properties on multiple ports at the same time by selecting multiple ports in the grid view and then changing settings in either the grid view or the detailed settings panel below the grid.

You can select multiple ports using standard Windows Explorer-shortcuts like <Shift-MouseClick> or <Ctrl-MouseClick>. You can also use the **Select All Ports** or **Deselect All Buttons** buttons the toolbar below the grid to control the port selection state.

The only setting that does not allow this is the IP address field, as this must always be a unique value.

Custom Rate Cap Profiles

You can define your own custom rate cap profiles for use with the port configuration panel. This allows you to define convenient shortcuts for commonly used rates, such as SONET or SDH payload containers.

Profile Location

The custom profiles must be contained in a text file called "ratecapprofiles.json", which must be located in the <Valkyrie2544DataDirectory>Profiles directory. To browse the <Valkyrie2544DataDirectory> select the **Explore Xena Data Directory** in the Valkyrie2544 **File** menu.

On initial startup the Valkyrie2544 will write a file called "ratecapprofiles.json.template" to the <Valkyrie2544DataDirectory>Profiles directory. You should make a copy of this file, rename the copy to "ratecapprofiles.json" and use this copy as the basis for your custom profiles. You can edit the file in any text editor, such as the standard Windows Notepad.

Adding Profiles

Each rate cap profile must look like the following fragment:

```
{
  "DisplayLabel": "STS1-2v",
  "PortRateCapValue": 96768000,
  "InterFrameGap": 8
},
```

Field	Explanation
DisplayLabel:	A text label that describes your profile. This label must be unique and will be used in the Valkyrie2544 dropdown box that allows you to select between the rate cap profiles.
PortRateCapVal	The rate cap value for the profile in bit/s.

ue:	
InterFrameGap:	The interframe gap value used to calculate the corresponding Ethernet layer 1 rate.

All rate cap profiles must be encapsulated in a set of square parentheses [...].

MULTI-STREAM CONFIGURATION

Overview

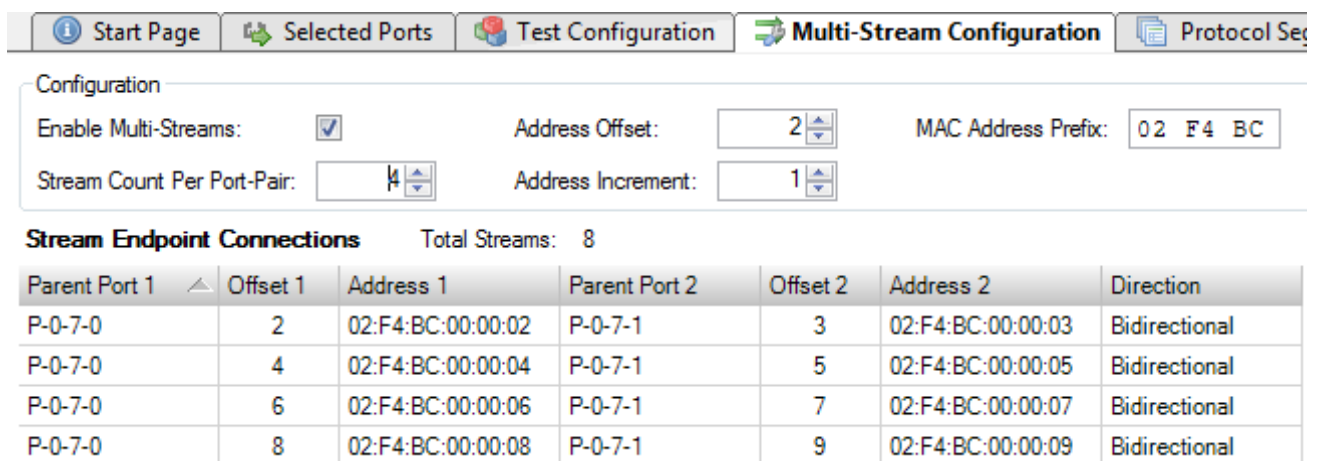
The default behaviour of Valkyrie2544 is to create a single stream between any two port pairs. Sometimes it is however required to exercise the values of certain address fields in the protocol headers in order to emulate many more clients than the physical port count allows. The multi-stream function can be used to achieve this.

When enabled the multi-stream function will use a number of streams to implement the flow between any two port pairs. The source and destination addresses in the streams will be varied based on certain configuration parameters.

User Interface

The multi-stream function is enabled and configured in the **Multi-Stream Configuration** tab, as shown below.

The top **Configuration** section contains the configurable parameters.



Configuration

Enable Multi-Streams: Address Offset: MAC Address Prefix:

Stream Count Per Port-Pair: Address Increment:

Stream Endpoint Connections Total Streams: 8

Parent Port 1	Offset 1	Address 1	Parent Port 2	Offset 2	Address 2	Direction
P-0-7-0	2	02:F4:BC:00:00:02	P-0-7-1	3	02:F4:BC:00:00:03	Bidirectional
P-0-7-0	4	02:F4:BC:00:00:04	P-0-7-1	5	02:F4:BC:00:00:05	Bidirectional
P-0-7-0	6	02:F4:BC:00:00:06	P-0-7-1	7	02:F4:BC:00:00:07	Bidirectional
P-0-7-0	8	02:F4:BC:00:00:08	P-0-7-1	9	02:F4:BC:00:00:09	Bidirectional

Below the configuration setting is a table which show a preview of the resulting streams with the current configuration parameter values. Each row in the table represent a “stream endpoint connection” which denotes the logical connection between two testport pairs. The connection can be unidirectional in which case it will consist of a single stream, created on the source port. Or it can be bidirectional, in which case it will consist of two streams, i.e. one stream created on each port.

The columns in the table show the actual values used for each stream endpoint connection. For an IP configuration the **Address** columns will show the resulting IP addresses. If the configuration uses pure layer-2 segment profiles (no IP segment) the **Address** columns will show the resulting MAC addresses.

The total number of streams that will be generated is shown at the top of the table.

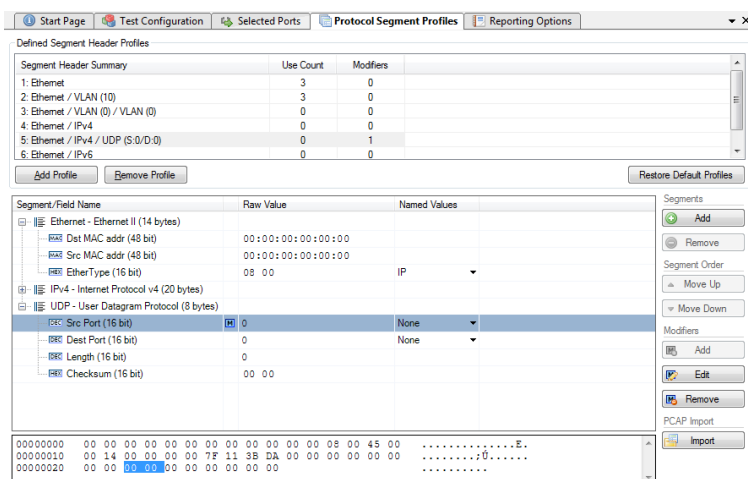
Configuration Parameters

The actual configuration parameters is described below.

Parameter	Explanation
Enable Multi-Streams:	Checking this option will enable the multi-stream function for the current Valkyrie2544 configuration.
Stream Count Per Port-Pair:	This value sets the stream count per port pair.
Address Offset:	The offset from zero (0) used when auto-generating the incrementing addresses. This can be used to avoid using the default gateway for an IP subnet (which usually is xxx.xxx.xxx.1).
Address Increment:	The incrementing value used when auto-generating the addresses.
MAC Address Prefix:	The MAC address prefix used when auto-generating the MAC addresses. This can be used to avoid collision with the factory-assigned Xena testport MAC addresses.

PROTOCOL SEGMENT PROFILES PANEL

This panel allow you to configure the protocol segment profiles used by the test ports. You can either use a single common profile for all ports or use a separate profile for each port. In this way you can define an asymmetric traffic setup.



Available Profiles List

The list view at the top show all defined profiles.

Managing Profiles

You can create and delete profiles to match the need of the current test scenario. To create a new profile press the **Add Profile** button. To delete a profile select it in the listview and press the **Remove Profile** button.

You can however not delete a profile that is currently being used by a testport. You can see the number of testports currently using a profile in the **Use Count** column in the listview at the top. To delete a profile that is in use you will first have to reassign all ports currently using that profile to another profile.

Default Profiles

When you create a new Valkyrie2544 configuration it will be populated with a number of default profiles. You can however freely modify and even delete one or more of the default profiles.

If for some reason you want to restore the default profiles you can press the **Restore Default Profiles** button. This will unconditionally remove all current profiles (also those that are in use) and restore the default set. All test ports will be associated with the first default “Ethernet-only” profile.

Profile Editor

You can edit each profile by selecting it in the top listview and using the treeview control below.

Add and Remove Segment Headers

To add a new segment header press the **Add** button in the **Segments** section to the right. You will then be presented with a dialog listing all built-in segment types from which you can select one or more types to be included. If you want to use a segment not currently supported by the Valkyrie2544 you can add a **raw segment** and specify the length in bytes. You can then afterwards edit the values in the resulting segment using the hex editor at the bottom.

You can remove one or more segments by selecting them and pressing the **Remove** button in the **Segments** section. You can change the order in which the segment headers appear by using the **Move Up/Down** buttons.

The Valkyrie2889 will automatically adjust the value of any standard “next-protocol” field (such as the **EtherType** field) in the segment headers when other segments are added, removed or moved.

Editing Field Values

The segment editor provides a treeview similar to the one found in the Wireshark protocol analyzer. You can thus expand each segment branch to view and optionally modify the various field values. Each field title is preceded with a small icon indicating the type of field value (decimal, hexadecimal, binary or IPv4/IPv6 address).

Certain fields, such as the EtherType, are associated with a set of commonly used named values. These can be selected in the **Named Values** column. You are however free to enter any value you want in the **Raw Value** column.

You can also edit the hex value of the segment headers directly using the hex editor at the bottom if you are so inclined.

MAC and IP Addresses

The address fields in the Ethernet and IP section headers will usually be overridden by the Valkyrie2544 when the teststreams are created:

The Source MAC (SMAC) address field in the first Ethernet segment will be set to the MAC address of the source port.

The Destination MAC (DMAC) address field in the first Ethernet segment will be set to the MAC address of the destination port. If an IP segment has been defined and a gateway IP address is defined for a source port, the Valkyrie2544 will however attempt to resolve the MAC address of the gateway using ARP or NDP and will then use this MAC address as the DMAC.

The IP Source/Destination Address fields in the IP segment header will be set to the values configured on the ports, as explained in the **Selected Ports** panel section above.

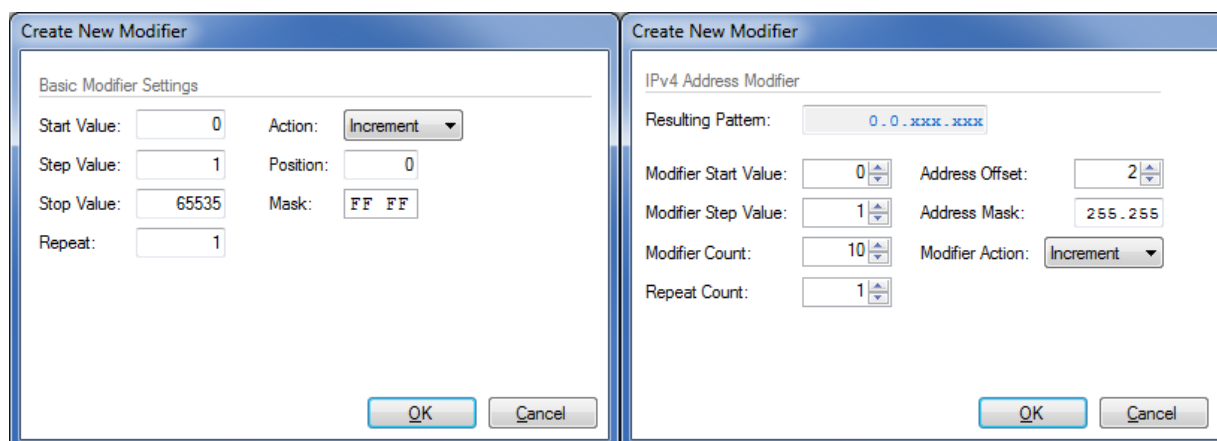
This replacement will however only be performed if you leave the fields at their default (all-zeros) value. If you specify anything else this value will be used instead.

Modifiers

It is possible to attach a modifier definition to one or more fields. A modifier will exercise the field with various values during the test and can be used to emulate a certain dynamic behavior. Modifiers are often used to exercise either the VLAN PCP or the IP DHCP fields. Alternatively one could apply modifiers to address fields like the DMAC field or the source or destination IP address fields.

Adding a Modifier

To add a modifier to a field simply select the field and press the **Add Modifier** button in the command panel to the right or right-click and select the **Add Modifier** popup menu option. A **Create New Modifier** dialog will now be shown. The content of the dialog will depend on the type of field. Most fields will use the **Basic Modifier** dialog shown below to the left. If the selected field is an IP address the **IP Modifier** dialog shown below to the right will be used instead.



Fill in the various field values and press the **OK** button to add the modifier to the field. Once a modifier has been added to a field this will be indicated by a small blue 'M' icon as shown in the screenshot above.

Editing a Modifier

To edit an existing modifier either select the field and press the **Edit Modifier** button in the command panel to the right, or right-click and select the **Edit Modifier** popup menu option. You will see the same dialog as was used to create the modifier.

Removing a Modifier

If you want to remove a modifier from a field simply select the field and press the **Remove Modifier** button in the command panel to the right, or right-click and select the **Remove Modifier** popup menu option.

Limitations

There is a limitation on the maximum number of modifiers that can be defined for each test stream. The limitation is specific for the test module type to which the port belong. Refer to the [Xena Test Module Comparison Page](#) for further details.

Value Ranges

A Value Range is intended to exercise one or more fields in a Valkyrie2544 protocol segment profiles with varying values. It is kind of similar to the hardware modifier explained above, with the following differences:

A Modifier is handled by hardware and varies a field value between packets on the same stream.

A Value Range is handled by software and varies a field value between different streams. All packets on the same stream have the same value.

A Value Range is defined on a field in a protocol segment profile, just like a modifier. It will then be used for all streams created on a port which is assigned this profile.

Value ranges can be used for both normal single-stream and advanced multi-stream scenarios. For normal scenarios it is most applicable for mesh configurations where multiple streams will be created on each port.

There is no limit to the number of values ranges added to a configuration. It is also possible to add both a modifier and a value range to a field. Whether that would yield usable results is unclear but it might be useful for larger fields.

PCAP Import

You can import the protocol segment structure from a PCAP file captured using Wireshark or any other capture application capable of generating a standard PCAP file. If the file contains multiple packets Valkyrie2544 will display a list allowing you to select the desired packet.

Valkyrie2544 will attempt to decode the packet and display the known protocol headers and their fields. Any unknown fields will be displayed as a raw segment. As there are limitations in the max.size of a custom segment the import may not be possible in some cases. The import dialog will inform you about this if the situation arises.

REPORTING OPTIONS PANEL

The Reporting Options panel contains a number of options that affect the way reports are generated for the test.

Report Identification

This section contains a number of options that can help identify the test context.

Customer Name: The name of the customer for which the test is performed.

Customer Service/Access Id: These two options allow you to provide details about the network circuits you are testing.

Comments: Allows you to provide any multi-line comments for the test configuration.

Report Generation Options

This section contains options that affect the way reports are generated.

Report Naming

Report Filename Prefix: Specifies the prefix for the report filename.

Append Timestamp to Filename: If checked a timestamp on the form <YYYYMMDD-HHMMSS> is appended to the filename prefix.

Report Content

Packets/Frames Terminology: This property allow you to determine whether the units of data are referred to as "packets" or "frames".

Include Detailed Port Information in Report: If checked the report will also contain detailed results for each port. If unchecked only the totals will be reported.

Include Charts in Report: If checked the report will include bar charts showing the test results. This is only applicable for PDF type reports.

Throughput Unit for Charts: Use this to select whether to use frames/second or bits/second as the unit for throughput charts.

Report Formats

This section allows you to select which types of reports will be generated. You can enable several types. The generated report files will be given a file extension that matches the selected type, i.e. ".pdf" for PDF files and so forth.

XML Report Specification

You can find the [specification for the XML Report here](#).

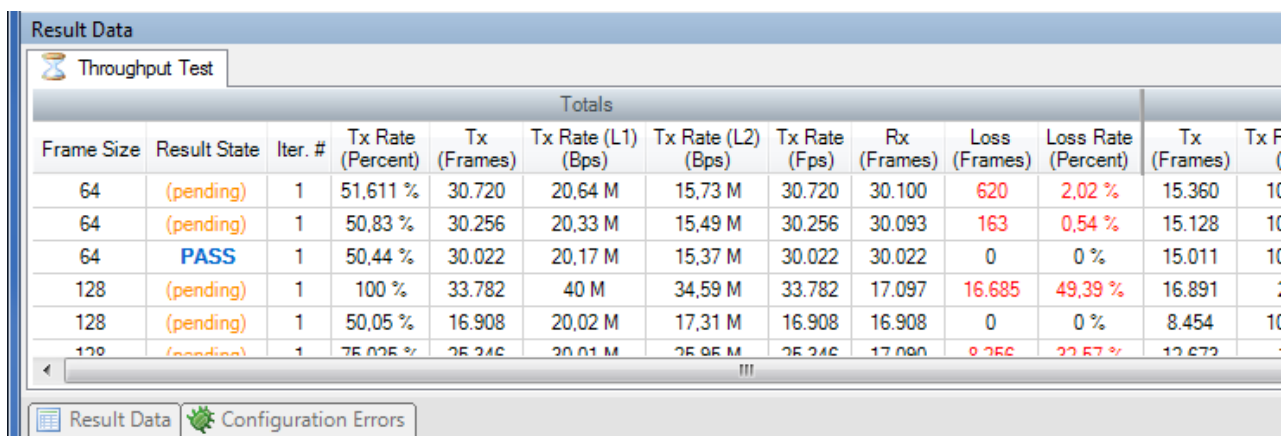
In the Report formats section you can also activate the "Also Log Intermediate Results" option. It will log intermediate results for each test type to separate CSV logfiles (one for each enabled test type) located in the "ResultLog" subdirectory in the main Xena2544-2G Reports directory.

RESULT DATA PANEL

The Result Data panel will display both polled progress data and result data for the tests being executed in a grid view. Each result will be shown in a single line in the grid.

The polled progress data is updated periodically while the current test trial is executing and will be shown with an *italics* font. After the test trial has completed the result data for that trial will be calculated and shown with a normal font.

The Result State column will show the state of the current trial run. While the test trial is in progress the state will always be “(pending)”. A trial result may be final in which case the column will show either **PASS** or **FAIL**, depending on the test outcome. If the test needs to perform another iteration the state will again be “(pending)”.




Result Data												
Throughput Test												
Totals												
Frame Size	Result State	Iter. #	Tx Rate (Percent)	Tx (Frames)	Tx Rate (L1) (Bps)	Tx Rate (L2) (Bps)	Tx Rate (Fps)	Rx (Frames)	Loss (Frames)	Loss Rate (Percent)	Tx (Frames)	Tx F (Frames)
64	(pending)	1	51,611 %	30.720	20,64 M	15,73 M	30.720	30.100	620	2,02 %	15.360	10
64	(pending)	1	50,83 %	30.256	20,33 M	15,49 M	30.256	30.093	163	0,54 %	15.128	10
64	PASS	1	50,44 %	30.022	20,17 M	15,37 M	30.022	30.022	0	0 %	15.011	10
128	(pending)	1	100 %	33.782	40 M	34,59 M	33.782	17.097	16.685	49,39 %	16.891	:
128	(pending)	1	50,05 %	16.908	20,02 M	17,31 M	16.908	16.908	0	0 %	8.454	10
128	(pending)	1	75,025 %	25.246	20,01 M	25,95 M	25.246	17.090	9.256	22,57 %	12.672	:

The columns used will depend of the test being performed. Most tests will provide a set of “totals” values and a set of per-port values but as stated this depends on the test.

Most cell values will be displayed using the normal font color. Values that indicate an error, such as a non-zero loss value, will be displayed with a red font color.

CONFIGURATION ERRORS PANEL

This panel will show any configuration errors detected by the program when you attempt to execute a configuration. If any such errors are found the panel will be shown and the execution attempt will be aborted. You will have to correct any reported errors before the program will allow you to execute the configuration.

Configuration Errors	
 Please correct the errors listed below before starting the test.	
Error Message	Resource ID
You must enable exactly two ports for use!	Errored Frames Filtering
You must specify exactly one destination port!	Errored Frames Filtering

Each error will be shown in a separate line in the panel. If you double-click on an error message you will be taken to the relevant configuration panel that will allow you to correct the error.

This panel is by default found in the lower auto-hiding panel group. By “auto-hiding” we mean that the panel is initially hidden but will popup either if the panel tab is clicked or if the application decides that it is necessary to direct the attention of the user to the panel. You can make the panel visible always by clicking the little “pin” icon in the top-right of the panel header.

COMMAND LINE INVOCATION

The Valkyrie2544 supports a number of command line options which can be used to automate the execution of a predefined configuration file.

Invocation Details

Valkyrie2544 is part of a new series of Xena test tools series that does not require a separate executable file to perform the command line functionality. The same executable (*Xena2544-2g_<version>.exe*) is used for both the GUI and the command line functions.

Command Line Options

The valid command line options are as follows:

Command option	Argument	Explanation
-c, -config	Path to configuration file	Load a test configuration file with the specified path.
-e, -execute	<none>	Execute the specified test configuration file (requires -c <file>). If this option is used the program will not show the GUI but will run in command line mode.
-u, -user	Username	Set the username used when logging on to Xena testers (default: xenarun).
-r, -reportpath	Path to reports	Set the path where reports are saved.
-o, -company	Company name	Set the company name used in reports.
-l, -logo	Path to logo	Set the path to the report logo file.
-f, -logfile	Logfile path	Path to logfile receiving console output
-h, -help	<none>	Display this help screen.

Sample Execution

Below is shown the typical output of a CLI session:

```
> Xena2544-2G.cmd -c c:\UserstestuserDocumentsXenaValkyrie2544-2Gcharttest.x2544 -e
INFO: Loading test configuration charttest.x2544
INFO: Activating chassis: demo.xenanetworks.com
INFO: Logon to demo.xenanetworks.com:22606 successful
INFO: All chassis connected and read
INFO: Starting subtest 'Throughput Test'
INFO: Reserving ports
INFO: Resetting used ports
INFO: Configuring ports
INFO: Initializing L3 address learning refresh
INFO: Toggling port sync state
INFO: InitTrial: 64 byte packets, 100,00% traffic rate, iteration 1
INFO: Setting up streams
INFO: Sending MAC learning packets
INFO: Traffic on source port(s) started
```

LIMITATIONS

The following limitations apply to the Valkyrie2544 test results.

Limitation	Explanation
<i>Latency Measurements</i>	Supported if the following conditions are fulfilled: Packet length can contain Xena test payload
<i>Jitter Measurements</i>	Supported if the following conditions are fulfilled: Xena server version >= 3.00 Test uses native MAC address for ports. Packet length can contain Xena test payload

	Number of ports in mesh ≤ 32 .
<i>One-second latency and jitter update</i>	Supported if the following conditions are fulfilled: Latency or jitter measurements support as described above. Xena server version ≥ 3.26

TROUBLESHOOTING

This section contains some guidelines when you encounter a problem with one of the Xena test applications, such as [ValkyrieManager](#), [Valkyrie2544](#), [Valkyrie1564](#), [Valkyrie3918](#) or [Valkyrie2889](#) and want to obtain help from your support representative.

BASIC INSTRUCTIONS

This section explains how you should report a problem to your support representative.

Describe the Problem

To enable fast resolution of your problem we request that your support request contains the following information:

- Name and version of the Xena test software used (the version can be seen in the main title bar)
- A description of what you are trying to do with the software.
- If the software misbehaved please describe what you actually encountered and you expected instead.
- Screenshots of any error situation.
- The test configuration file for the application (contained in the support archive).
- Any debug log files for the application (contained in the support archive).

Create a Support Information Archive

The Xena test applications include a menu entry called **Create Support Information Archive** which will create a compressed ZIP archive containing both the currently loaded configuration file and the content of the **Logs** and **Settings** directories. This file can then be emailed to your support representative.

For the Valkyrie2544 and similar test applications this menu entry is located in the **Help** menu. For the ValkyrieManager application it is located in the **Tools** ribbon menu.

Please note: For the Valkyrie2544 and similar test applications it is important that the configuration file used when the problem was detected is loaded when the support archive is generated. Otherwise the configuration file will not be part of the archive.

Attach Screenshots

Screenshots are a great and easy way of communicating what you see on the screen. To obtain a screenshot of a running program and send it to Xena support perform the following actions:

1. Point your mouse inside the program window.
2. Press the <Alt-PrintScr> keys simultaneously.
3. Switch to your email program and start a new email message.
4. Press <Ctrl-V> or select "Paste" from the menu (most likely the "Edit" menu) to insert the screenshot into the email.

ADDITIONAL DETAILS

This section goes into a bit more detail about the various items contained in the Xena Support Archive mentioned above.

Configuration Files

The Xena test applications keeps their configurations in special files with an application-specific extension. The extensions used are as follows:

<i>Valkyrie2544:</i>	*.x44 or *.x2544
<i>Valkyrie1564:</i>	*.x1564
<i>Valkyrie3918:</i>	*.x3918
<i>ValkyrieManager:</i>	*.xmcfg

The configuration files will be located in a common Xena data directory on your PC. More specifically they will be located in the following path: **C:<UserAppDataDir>Xena<XenaTestApplication>**. The <UserAppDataDir> directory depends on your Windows version:

<i>Windows Vista, 7 and 8:</i>	C:\Users<username>\AppData\Roaming
<i>Windows XP:</i>	C:\Documents and Settings<username>\Application Data

The <username> is the name of the currently logged-in user.

The Xena test applications include a menu entry called **Explore Xena Data Directory** in the **File** menu that will open a Windows Explorer in the correct directory, regardless of the Windows version.

Debug Log Files

The Xena test applications logs certain events and errors to a series of debug log file located in the Logs subdirectory under the above mentioned main application data directory. If you encounter errors it may help the support if you include these files in your support request.